

Cheetah Dual 60M 305-325 Watt

MONOCRYSTALLINE MODULE

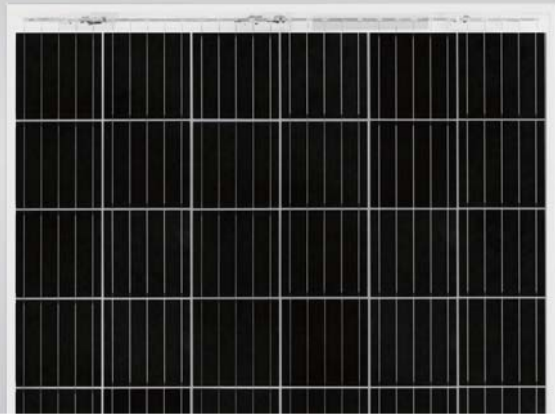
Positive power tolerance of 0~+3%

ISO9001:2008, ISO14001:2004, OHSAS18001 certified factory

IEC61215, IEC61730, UL1703 certified product



PERC



KEY FEATURES



PID FREE:

The possibility of PID effect generation is greatly reduced by unique frameless design.



Higher Lifetime Power Yield:

0.5% annual power degradation
30 year linear power warranty



Saving BOS Cost:

Designed for high voltage systems of up to 1500 VDC, saving BOS cost



Improved Durability and Reliability:

Dual glass reduces micro-cracking, snail trails, corruptions caused by moisture, sand, salt mist, acid, alkali, etc.



Less Maintenance Requirement:

Reduced soiling and snow coverage requires less maintenance and enhances fire safety



Aesthetically Pleasing Design:

White encapsulation material maximizes module efficiency up to 19.48% (60-mono max. output 325W); Transparent EVA increases light transmission, ideal for installations requiring light to pass through

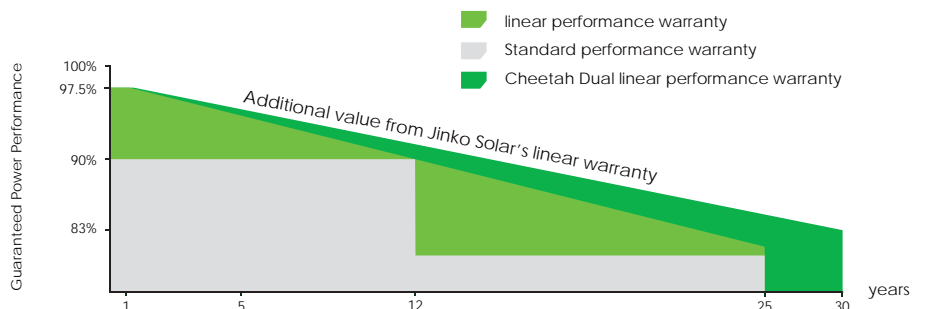


Strengthened Mechanical Support:

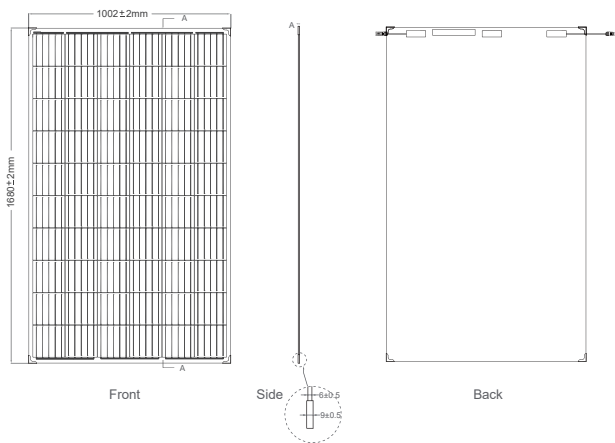
5400 Pa snow load, 2400 Pa wind load

LINEAR PERFORMANCE WARRANTY

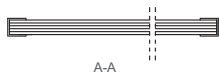
12 Year Product Warranty • 30 Year Linear Power Warranty
0.5% Annual Degradation Over 30 years



Engineering Drawings



I



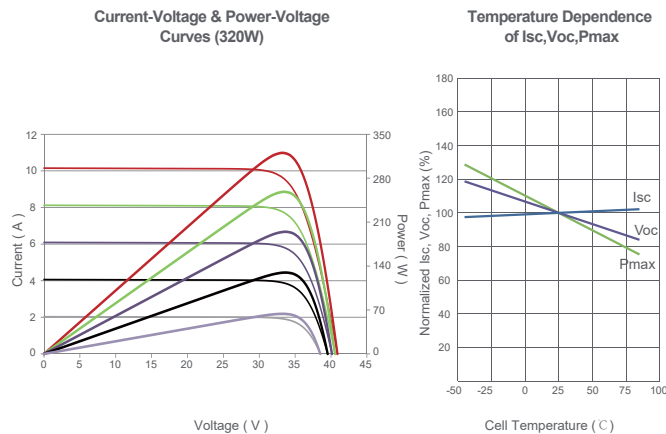
A-A

Packaging Configuration

(Two pallets = One stack)

36pcs/pallet , 72pcs/stack, 864pcs/40'HQ Container

Electrical Performance & Temperature Dependence



Mechanical Characteristics

Cell Type	Mono PERC 158.75×158.75mm
No. of cells	60 (6×10)
Dimensions	1680×1002×6mm (66.14×39.45×0.24 inch)
Weight	23.5 kg (51.8 lbs)
Front Glass	2.5mm, High transmission, Antireflection coating, heat strengthened glass
Back Glass	2.5mm heat strengthened glass
Junction Box	IP67 Rated
Output Cables	TUV 1×4.0mm ² (+): 250mm , (-): 150mm or customized length

SPECIFICATIONS

Module Type	JKM305M-60-DV		JKM310M-60-DV		JKM315M-60-DV		JKM320M-60-DV		JKM325M-60-DV	
	STC	NOCT	STC	NOCT	STC	NOCT	STC	NOCT	STC	NOCT
Maximum Power (Pmax)	305Wp	227Wp	310Wp	231Wp	315Wp	235Wp	320Wp	239Wp	325Wp	242Wp
Maximum Power Voltage (Vmp)	32.8V	30.8V	33.0V	31.0V	33.2V	31.2V	33.4V	31.4V	33.6V	31.6V
Maximum Power Current (Imp)	9.30A	7.40A	9.40A	7.49A	9.49A	7.56A	9.59A	7.62A	9.68A	7.66A
Open-circuit Voltage (Voc)	40.3V	37.2V	40.5V	37.4V	40.7V	37.6V	40.9V	37.8V	41.1V	38.0V
Short-circuit Current (Isc)	9.83A	8.12A	9.92A	8.20A	10.04A	8.33A	10.15A	8.44A	10.20A	8.54A
Module Efficiency STC (%)	18.28%		18.58%		18.88%		19.18%		19.48%	
Operating Temperature (°C)	-40°C~+85°C									
Maximum System Voltage	1500VDC (IEC)									
Maximum Series Fuse Rating	20A									
Power Tolerance	0~+3%									
Temperature Coefficients of Pmax	-0.37%/°C									
Temperature Coefficients of Voc	-0.28%/°C									
Temperature Coefficients of Isc	0.048%/°C									
Nominal Operating Cell Temperature (NOCT)	45±2°C									

STC: Irradiance 1000W/m² Cell Temperature 25°C AM=1.5

NOCT: Irradiance 800W/m² Ambient Temperature 20°C AM=1.5 Wind Speed 1m/s

* Power measurement tolerance: ± 3%