

Eagle HC 72M 365-385 Watt

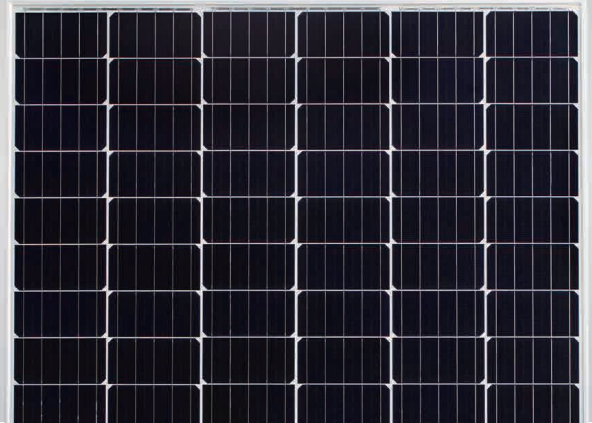
MONO CRYSTALLINE MODULE

Positive power tolerance of 0~+3%

- Half Cell
- Mono PERC 72 Cell



PERC



KEY FEATURES



5 Busbar Solar Cell:

5 busbar solar cell adopts new technology to improve the efficiency of modules, offers a better aesthetic appearance, making it perfect for rooftop installation.



High Efficiency:

Higher module conversion efficiency (up to 19.53%) benefit from Half cells structure (low resistance characteristic)



PID RESISTANT:

Limited power degradation of Eagle module caused by PID effect is guaranteed under strict testing condition (85 C /85%RH,96hours) for mass production.



Low-light Performance:

Advanced glass and solar cell surface texturing allow for excellent performance in low-light environments.



Severe Weather Resilience:

Certified to withstand: wind load (2400 Pascal) and snow load (5400 Pascal).



Durability against extreme environmental conditions:

High salt mist and ammonia resistance certified by TUV NORD.

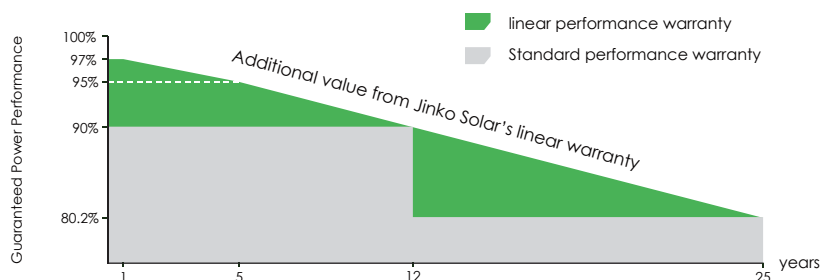


LINEAR PERFORMANCE WARRANTY

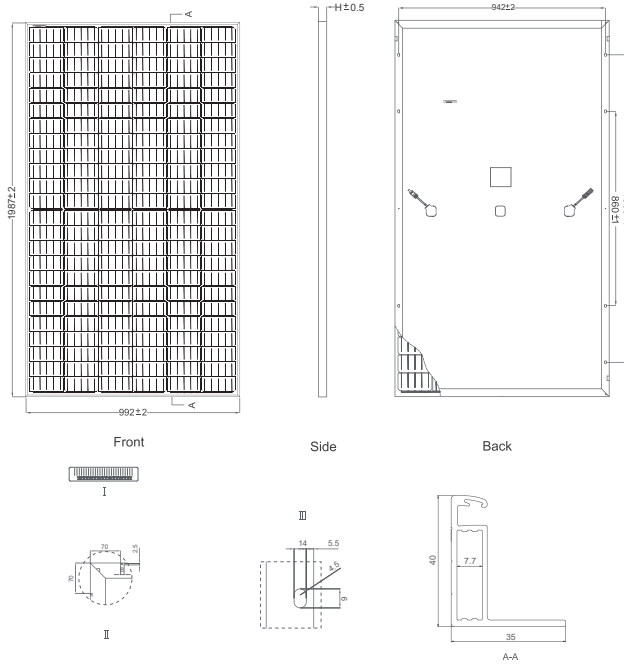
10 Year Product Warranty • 25 Year Linear Power Warranty

• ISO9001:2008、ISO14001:2004、OHSAS18001 certified factory.

• IEC61215、IEC61730 certified products



Engineering Drawings

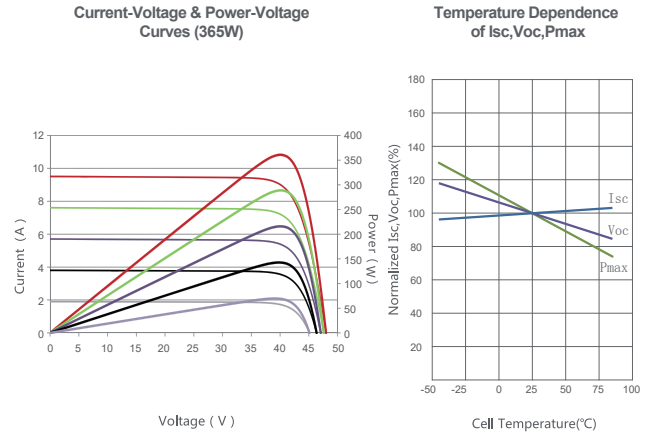


Packaging Configuration

(Two pallets =One stack)

26pcs/pallet , 52pcs/stack, 572 pcs/40'HQ Container

Electrical Performance & Temperature Dependence



Mechanical Characteristics

Cell Type	Mono-crystalline PERC 156×156mm (6 inch)
No. of Half-cells	144 (12×12)
Dimensions	1987×992×40mm (78.23×39.05×1.57 inch)
Weight	26.5 kg (58.4 lbs)
Front Glass	4.0mm, Anti-Reflection Coating, High Transmission, Low Iron, Tempered Glass
Frame	Anodized Aluminium Alloy
Junction Box	IP67 Rated
Output Cables	anode 290mm, cathode 145mm

SPECIFICATIONS

Module Type	JKM365M-72H		JKM370M-72H		JKM375M-72H		JKM380M-72H		JKM385M-72H	
	STC	NOCT	STC	NOCT	STC	NOCT	STC	NOCT	STC	NOCT
Maximum Power (Pmax)	365Wp	275Wp	370Wp	279Wp	375Wp	283Wp	380Wp	287Wp	385Wp	291Wp
Maximum Power Voltage (Vmp)	39.9V	38.1V	40.1V	38.3V	40.2V	38.5V	40.3V	38.7V	40.5V	38.9V
Maximum Power Current (Imp)	9.15A	7.21A	9.23A	7.28A	9.31A	7.34A	9.39A	7.41A	9.46A	7.47A
Open-circuit Voltage (Voc)	48.5V	47.1V	48.7V	47.4V	48.9V	47.7V	49.1V	48.0V	49.3V	48.3V
Short-circuit Current (Isc)	9.43A	7.37A	9.53A	7.43A	9.63A	7.49A	9.73A	7.55A	9.83A	7.61A
Module Efficiency STC (%)	18.52%		18.77%		19.02%		19.28%		19.53%	
Operating Temperature(°C)	-40°C~+85°C									
Maximum system voltage	1000V DC (IEC)									
Maximum series fuse rating	20A									
Power tolerance	0~+3%									
Temperature coefficients of Pmax	-0.37%/°C									
Temperature coefficients of Voc	-0.29%/°C									
Temperature coefficients of Isc	0.048%/°C									
Nominal operating cell temperature (NOCT)	45±2°C									

STC: Irradiance 1000W/m² Cell Temperature 25°C AM=1.5

NOCT: Irradiance 800W/m² Ambient Temperature 20°C AM=1.5 Wind Speed 1m/s

* Power measurement tolerance: ± 3%