

JKM270PP-60-DV

250-270 Watt

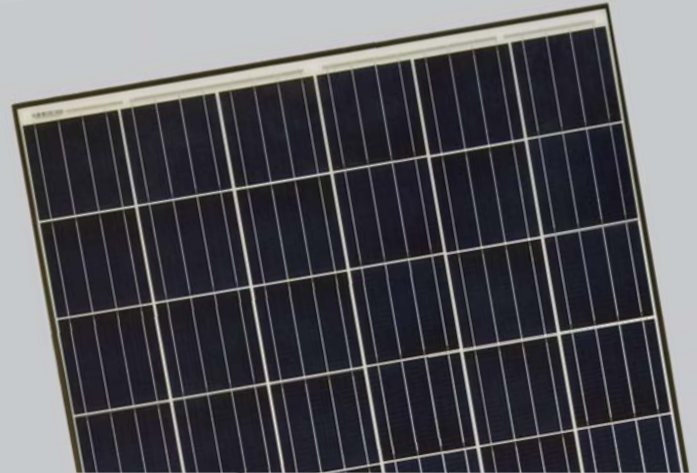
POLY CRYSTALLINE MODULE

Positive power tolerance of 0/+3%

ISO9001:2008 · ISO14001:2004 · OHSAS18001 certified factory.
IEC61215 · IEC61730 certified products.



(4BB)



KEY FEATURES



PID Free Module:

Anti-PID cell and encapsulation technology
Frameless module requires no module grounding which may causes PID



Higher Lifetime Power Yield:

<0.5% annual power degradation
30 year linear power warranty



Saving BOS Cost:

Designed for high voltage systems of up to 1500 VDC, saving on BOS cost



Improved Durability and Reliability:

Dual glass reduce micro-cracking, snail trails, corrosions caused by moisture, sand, salt mist, acid, alkali, etc.



Less Maintenance Requirement:

Reduced soiling and snow coverage requires less maintenance and enhanced fire safety



Aesthetically Pleasing Design:

White back plate maximizes module efficiency up to 16.54% (60-poly max. output 270W); Transparent back plate, increases light transmission, ideal for installation requiring light pass through

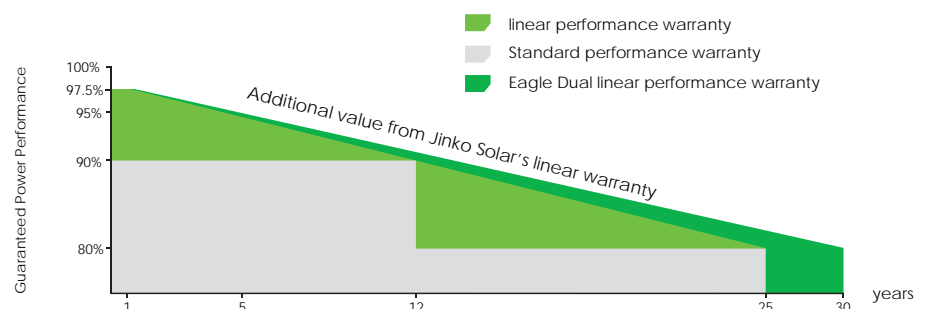


Strengthened Mechanical Support:

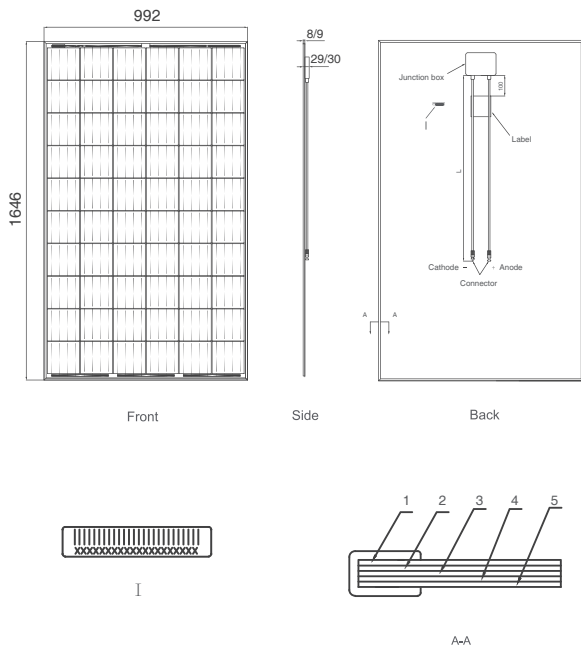
5400 Pa snow load, 2400 Pa wind load

LINEAR PERFORMANCE WARRANTY

10 Year Product Warranty • 30 Year Linear Power Warranty
0.5% Annual Degradation Over 30 years



Engineering Drawings

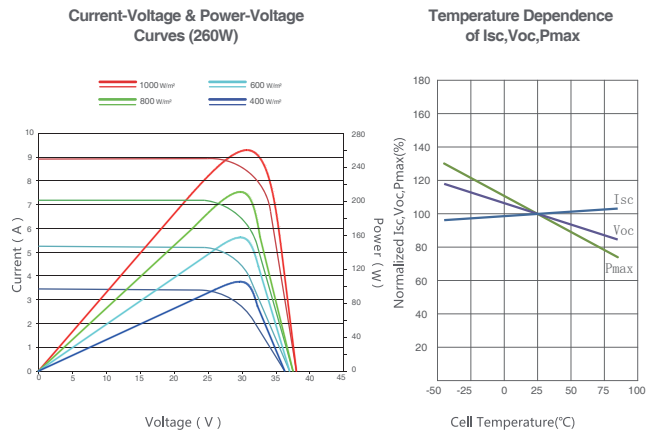


Packaging Configuration

(Two boxes=One pallet)

30pcs/ box, 60pcs/ pallet, 840 pcs/ 40'HQ Container

Electrical Performance & Temperature Dependence



Mechanical Characteristics

Cell Type	Poly-crystalline 156×156mm (6 inch)
No. of cells	60 (6×10)
Dimensions	1646×992×8mm(65.00×39.05×0.32 inch, 2.0mm Glass) 1646×992×9mm(65.00×39.05×0.35 inch, 2.5mm Glass)
Weight	20kg(44lbs, 2.0mm Glass) / 24kg(53 lbs, 2.5mm Glass)
Front Glass	2.0/2.5mm High permeability, Antireflection coating, semi-tempered glass
Back Glass	2.0/ 2.5mm Semi-tempered glass
Junction Box	IP67 Rated
Output Cables	TUV 1×4.0mm ² , Cable Length:900mm

SPECIFICATIONS

Module Type	JKM250PP-DV		JKM255PP-DV		JKM260PP-DV		JKM265PP-DV		JKM270PP-DV	
	STC	NOCT	STC	NOCT	STC	NOCT	STC	NOCT	STC	NOCT
Maximum Power (Pmax)	250Wp	186Wp	255Wp	190Wp	260Wp	194Wp	265Wp	198Wp	270Wp	202Wp
Maximum Power Voltage (Vmp)	30.5V	27.9V	30.8V	28.1V	31.1V	28.3V	31.4V	28.7V	31.7V	29.0V
Maximum Power Current (Imp)	8.20A	6.67A	8.28A	6.75A	8.37A	6.84A	8.44A	6.91A	8.52A	6.97A
Open-circuit Voltage (Voc)	37.7V	34.7V	38.0V	35.0V	38.1V	35.1V	38.6V	35.3V	38.8V	35.6V
Short-circuit Current (Isc)	8.85A	7.15A	8.92A	7.22A	8.98A	7.26A	9.03A	7.31A	9.09A	7.35A
Module Efficiency STC (%)	15.31%		15.62%		15.92%		16.23%		16.54%	
Operating Temperature(°C)	-40°C~+85°C									
Maximum system voltage	1500VDC (IEC)									
Maximum series fuse rating	15A									
Power tolerance	0~+3%									
Temperature coefficients of Pmax	-0.40%/°C									
Temperature coefficients of Voc	-0.30%/°C									
Temperature coefficients of Isc	0.06%/°C									
Nominal operating cell temperature (NOCT)	45±2°C									

STC: Irradiance 1000W/m² Cell Temperature 25°C AM=1.5

NOCT: Irradiance 800W/m² Ambient Temperature 20°C AM=1.5 Wind Speed 1m/s

* Power measurement tolerance: ± 3%