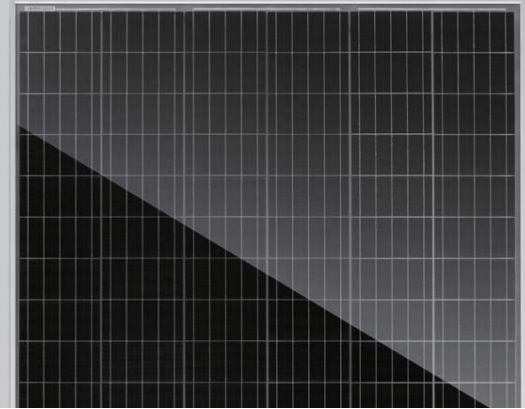


Eagle Bifacial HC 60M G2 315-335 Watt

MONO PERC HALF CELL MODULE

Positive power tolerance of 0~+3%



- ISO9001:2008 Quality Standards
- ISO14001:2004 Environmental Standards
- OHSAS18001 Occupational Health & Safety Standards
- IEC61215, IEC61730 certified products

Nomenclature:

JKM335M-60HL-TV

Code	Cell	Code	Cell	Code	Certification
null	Full	null	Normal	T	Transparent backsheet
H	Half	L	Diamond		



KEY FEATURES



Innovative Solar Cells

5 busbar mono half cell technology



PID Free

World's 1st PID-free module



Higher Lifetime Power Yield

0.55% annual power degradation
30 year linear power warranty



Saving BOS Cost

Light-weight design for easy installation and low BOS cost



Higher power output

Module power increases 5-25% generally (per different reflective condition)
lower LCOE and higher IRR

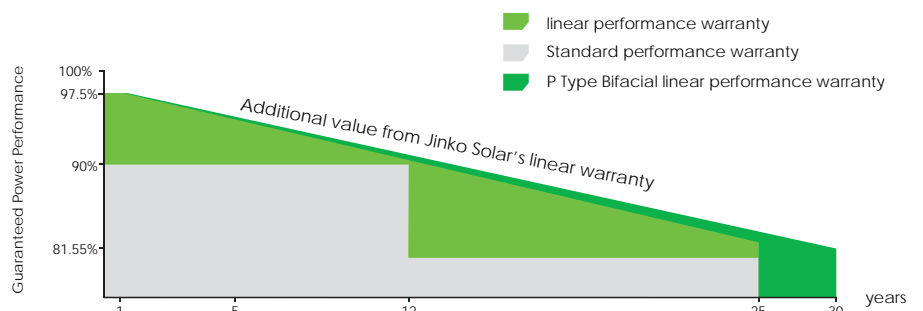


Better low-light performance

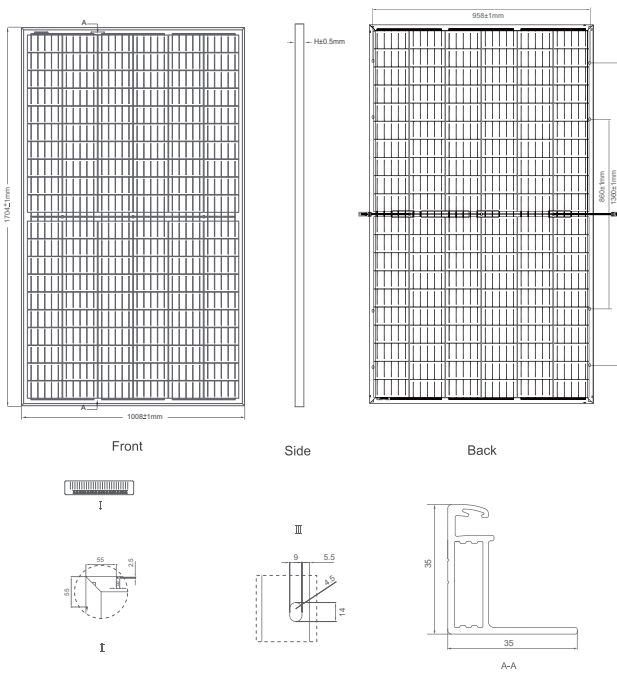
Excellent performance in low-light environments
(e.g. early morning, dusk, and cloud, etc.)

LINEAR PERFORMANCE WARRANTY

12 Year Product Warranty • 30 Year Linear Power Warranty
0.55% Annual Degradation Over 30 years



Engineering Drawings

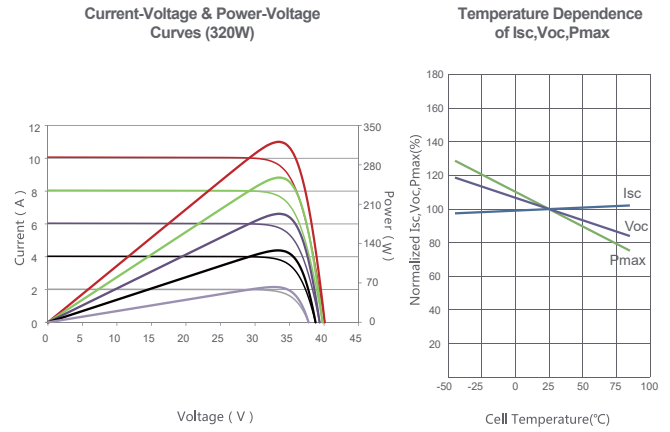


Packaging Configuration

(Two pallets = One stack)

31pcs/pallet, 62pcs/stack, 806pcs/40'HQ Container

Electrical Performance & Temperature Dependence



Mechanical Characteristics

Cell Type	Mono PERC 158.75×158.75mm
No. of cells	120 (6×20)
Dimensions	1704×1008×35mm (67.09×39.69×1.38 inch)
Weight	19.5kg (43.0 lbs)
Front Glass	3.2mm, Anti-Reflection Coating, High Transmission, Low Iron, Tempered Glass
Frame	Anodized Aluminium Alloy
Junction Box	IP67 Rated
Output Cables	12 AWG, (+): 900mm, (-): 900mm or customized length
Fire Type	Type 1

SPECIFICATIONS

Module Type	JKM315M-60HL-TV		JKM320M-60HL-TV		JKM325M-60HL-TV		JKM330M-60HL-TV		JKM335M-60HL-TV	
	STC	NOCT	STC	NOCT	STC	NOCT	STC	NOCT	STC	NOCT
Maximum Power (Pmax)	315Wp	234Wp	320Wp	238Wp	325Wp	241Wp	330Wp	245Wp	335Wp	249Wp
Maximum Power Voltage (Vmp)	32.70V	30.69V	32.90V	30.93V	33.10V	31.13V	33.24V	31.33V	33.40V	31.48V
Maximum Power Current (Imp)	9.63A	7.62A	9.73A	7.68A	9.82A	7.75A	9.93A	7.82A	10.03A	7.90A
Open-circuit Voltage (Voc)	39.90V	37.58V	40.10V	37.77V	40.30V	37.96V	40.39V	38.04V	40.46V	38.11V
Short-circuit Current (Isc)	9.99A	8.07A	10.07A	8.13A	10.15A	8.20A	10.25A	8.28A	10.34A	8.35A
Module Efficiency STC (%)	18.33%		18.62%		18.91%		19.20%		19.49%	
Operating Temperature(°C)	-40°C~+85°C									
Maximum system voltage	1500VDC (IEC)									
Maximum series fuse rating	25A									
Power tolerance	0~+3%									
Temperature coefficients of Pmax	-0.36%/°C									
Temperature coefficients of Voc	-0.29%/°C									
Temperature coefficients of Isc	0.048%/°C									
Nominal operating cell temperature (NOCT)	45±2°C									
Refer. Bifacial Factor	70±5%									

BIFACIAL OUTPUT-REAR SIDE POWER GAIN

		JKM315M-60HL-TV	JKM320M-60HL-TV	JKM325M-60HL-TV	JKM330M-60HL-TV	JKM335M-60HL-TV
5%	Maximum Power (Pmax)	331Wp	336Wp	341Wp	347Wp	352Wp
	Module Efficiency STC (%)	19.24%	19.55%	19.86%	20.16%	20.47%
15%	Maximum Power (Pmax)	362Wp	368Wp	374Wp	380Wp	385Wp
	Module Efficiency STC (%)	21.08%	21.41%	21.75%	22.08%	22.42%
25%	Maximum Power (Pmax)	394Wp	400Wp	406Wp	413Wp	419Wp
	Module Efficiency STC (%)	22.91%	23.27%	23.64%	24.00%	24.37%

* STC: Irradiance 1000W/m² Cell Temperature 25°C AM=1.5

NOCT: Irradiance 800W/m² Ambient Temperature 20°C AM=1.5 Wind Speed 1m/s

* Power measurement tolerance: ± 3%

IEC 60904-1, Photovoltaic devices - Part 1: Measurement of photovoltaic current-voltage characteristics

CAUTION: READ SAFETY AND INSTALLATION INSTRUCTIONS BEFORE USING THE PRODUCT.

© Jinko Solar Co., Ltd. All rights reserved. Specifications included in this datasheet are subject to change without notice.
JKM315-335M-60HL-TV-F35-A2-US