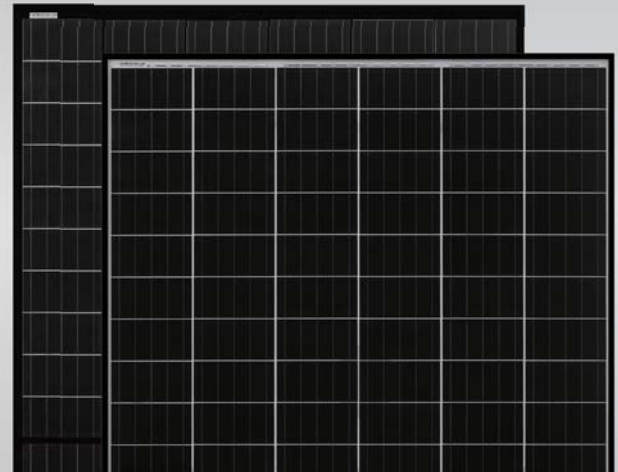


Eagle 60HM G2 325-345 Watt

MONO PERC HALF CELL MODULE

Positive power tolerance of 0~+3%



KEY FEATURES



Diamond Cell Technology

Uniquely designed high performance 5 busbar mono PERC half cell



Higher Module Power

Decrease in current loss yields higher module efficiency



Shade Tolerance

More shade tolerance due to twin arrays



PID FREE

Reinforced cell prevents potential induced degradation



Strength and Durability

Certified for high snow (5400Pa) and wind (2400 Pa) loads

- ISO9001:2008 Quality Standards
- ISO14001:2004 Environmental Standards
- OHSAS18001 Occupational Health & Safety Standards
- IEC61215, IEC61730 certified products
- UL1703 certified products

Nomenclature:

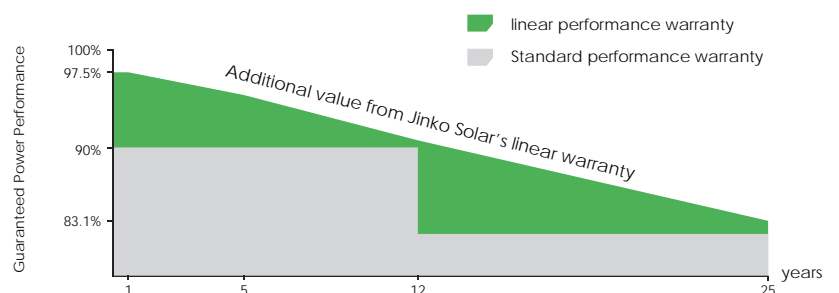
JKM345M-60HBL

Code	Cell	Code	Backsheet	Code	Cell
null	Full	null	White	null	Normal
H	Half	B	Black	L	Diamond

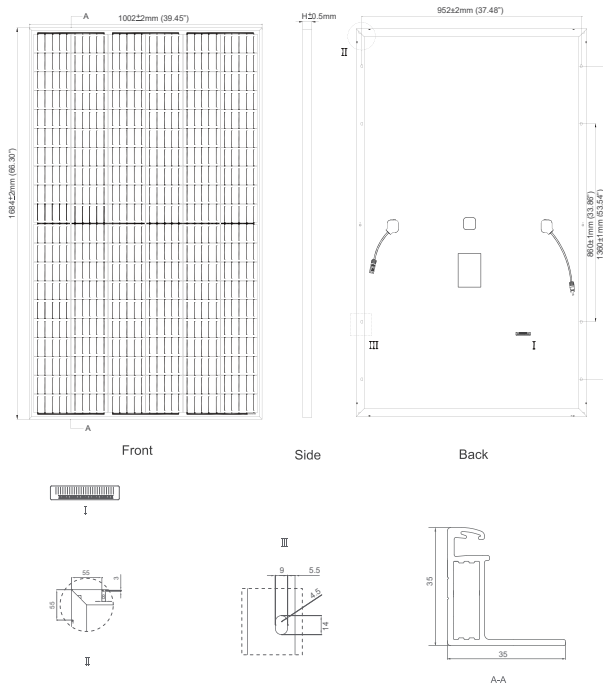


LINEAR PERFORMANCE WARRANTY

12 Year Product Warranty • 25 Year Linear Power Warranty



Engineering Drawings

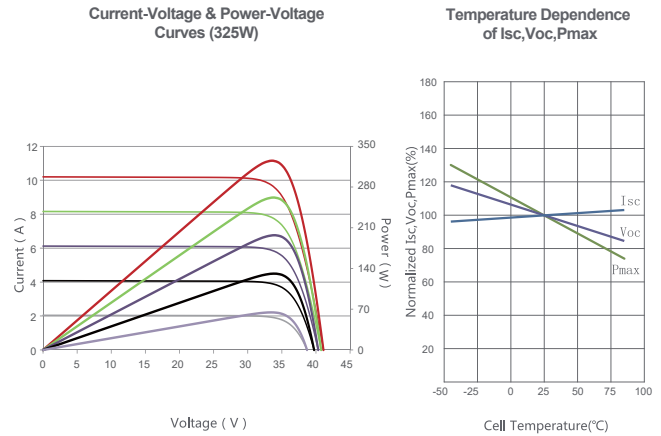


Packaging Configuration

(Two pallets = One stack)

31pcs/pallet, 62pcs/stack, 806pcs/40'HQ Container

Electrical Performance & Temperature Dependence



Mechanical Characteristics

Cell Type	Mono PERC Diamond Cell (158.75 x 158.75 mm)
No. of Half-cells	120 (6×20)
Dimensions	1684×1002×35mm (66.30×39.45×1.38 inch)
Weight	19.0 kg (41.9 lbs)
Front Glass	3.2mm, Anti-Reflection Coating, High Transmission, Low Iron, Tempered Glass
Frame	Anodized Aluminum Alloy
Junction Box	IP67 Rated
Output Cables	12AWG, (+) 1825mm (71.85 in), (-) 1825mm (71.85 in) or Customized Length
Fire Type	Type 1

SPECIFICATIONS

Module Type	JKM325M-60HL		JKM330M-60HL		JKM335M-60HL		JKM340M-60HL		JKM345M-60HL	
	STC	NOCT	STC	NOCT	STC	NOCT	STC	NOCT	STC	NOCT
Maximum Power (Pmax)	325Wp	242Wp	330Wp	246Wp	335Wp	250Wp	340Wp	253Wp	345Wp	257Wp
Maximum Power Voltage (Vmp)	33.6V	31.6V	33.8V	31.8V	34.0V	32.0V	34.2V	32.2V	34.4V	32.4V
Maximum Power Current (Imp)	9.68A	7.66A	9.77A	7.74A	9.87A	7.82A	9.96A	7.86A	10.04A	7.94A
Open-circuit Voltage (Voc)	41.1V	38.0V	41.3V	38.2V	41.5V	38.4V	41.7V	38.6V	41.9V	38.8V
Short-circuit Current (Isc)	10.20A	8.54A	10.31A	8.65A	10.36A	8.74A	10.55A	8.86A	10.64A	8.97A
Module Efficiency STC (%)	19.26%		19.56%		19.85%		20.15%		20.45%	
Operating Temperature (°C)	-40°C~+85°C									
Maximum System Voltage	1000VDC(UL)/1000VDC(IEC)									
Maximum Series Fuse Rating	20A									
Power Tolerance	0~+3%									
Temperature Coefficients of Pmax	-0.36%/°C									
Temperature Coefficients of Voc	-0.28%/°C									
Temperature Coefficients of Isc	0.048%/°C									
Nominal Operating Cell Temperature (NOCT)	45±2°C									

STC: Irradiance 1000W/m² Cell Temperature 25°C AM=1.5

NOCT: Irradiance 800W/m² Ambient Temperature 20°C AM=1.5 Wind Speed 1m/s

* Power measurement tolerance: ± 3%

CAUTION: READ SAFETY AND INSTALLATION INSTRUCTIONS BEFORE USING THE PRODUCT.

© Jinko Solar Co., Ltd. All rights reserved. Specifications included in this datasheet are subject to change without notice.
JKM325-345M-60HL-A2-US