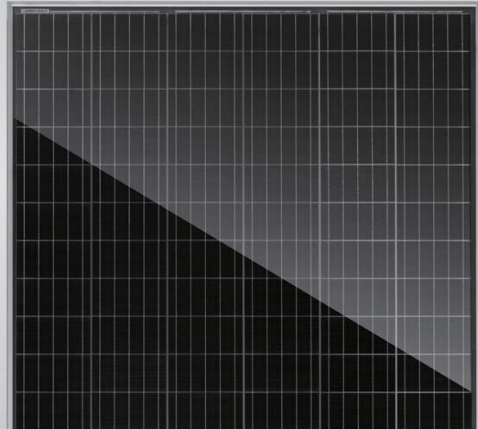


Eagle Bifacial HC 72M G2 380-400 Watt

MONO PERC HALF CELL MODULE

Positive power tolerance of 0~+3%



- ISO9001:2008 Quality Standards
- ISO14001:2004 Environmental Standards
- OHSAS18001 Occupational Health & Safety Standards
- IEC61215, IEC61730 certified products

Nomenclature:

JKM400M-72HL-TV

Code	Cell	Code	Cell	Code	Certification
null	Full	null	Normal	T	Transparent backsheet
H	Half	L	Diamond		



KEY FEATURES



Innovative Solar Cells

5 busbar mono half cell technology



PID Free

World's 1st PID-free module



Higher Lifetime Power Yield

0.55% annual power degradation
30 year linear power warranty



Saving BOS Cost

Light-weight design for easy installation and low BOS cost



Higher power output

Module power increases 5-25% generally (per different reflective condition)
lower LCOE and higher IRR

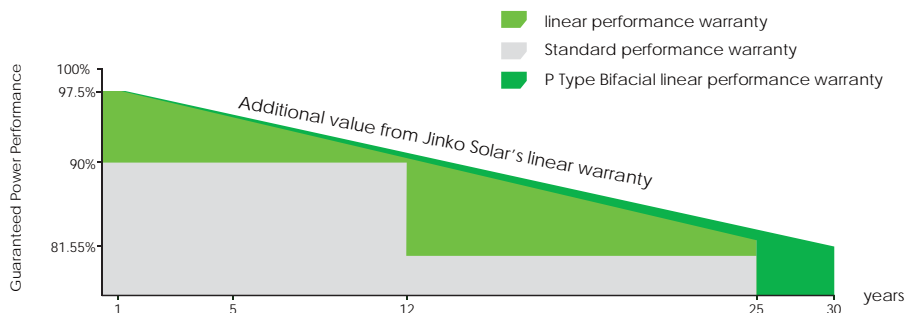


Better low-light performance

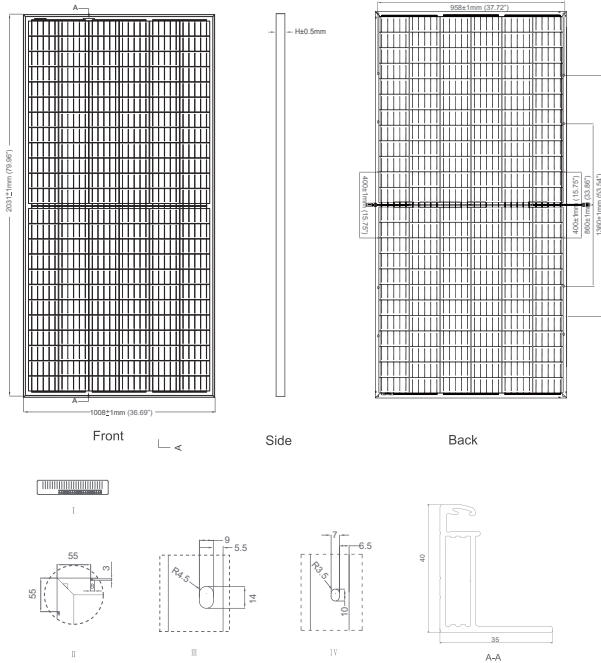
Excellent performance in low-light environments
(e.g. early morning, dusk, and cloud, etc.)

LINEAR PERFORMANCE WARRANTY

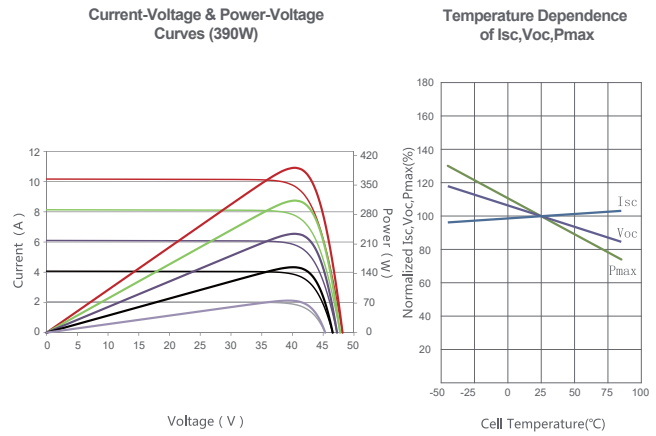
12 Year Product Warranty • 30 Year Linear Power Warranty
0.55% Annual Degradation Over 30 years



Engineering Drawings



Electrical Performance & Temperature Dependence



Mechanical Characteristics

Cell Type	Mono PERC Diamond Cell (158.75 x 158.75 mm)
No. of Half-cells	144 (6x24)
Dimensions	2031x1008x40mm (79.96x39.69x1.57 inch)
Weight	23.3 kg (51.3 lbs)
Front Glass	3.2mm, Anti-Reflection Coating, High Transmission, Low Iron, Tempered Glass
Frame	Anodized Aluminium Alloy
Junction Box	IP67 Rated
Output Cables	12 AWG, (+): 1400mm, (-): 1400mm or customized length
Fire Type	Type 1

Packaging Configuration

(Two pallets = One stack)

27pcs/pallet, 54pcs/stack, 594pcs/40'HQ Container

SPECIFICATIONS

Module Type	JKM380M-72HL-TV		JKM385M-72HL-TV		JKM390M-72HL-TV		JKM395M-72HL-TV		JKM400M-72HL-TV	
	STC	NOCT	STC	NOCT	STC	NOCT	STC	NOCT	STC	NOCT
Maximum Power (Pmax)	380Wp	282Wp	385Wp	286Wp	390Wp	290Wp	395Wp	293Wp	400Wp	297Wp
Maximum Power Voltage (Vmp)	39.36V	36.83V	39.50V	36.88V	39.62V	37.22V	39.83V	37.55V	40.01V	37.64V
Maximum Power Current (Imp)	9.66A	7.66A	9.76A	7.75A	9.84A	7.78A	9.92A	7.81A	10.00A	7.89A
Open-circuit Voltage (Voc)	47.96V	45.17V	48.10V	45.30V	48.14V	45.34V	48.26V	45.45V	48.35V	45.54V
Short-circuit Current (Isc)	10.02A	8.09A	10.08A	8.14A	10.17A	8.21A	10.23A	8.26A	10.32A	8.34A
Module Efficiency STC (%)	18.56%		18.81%		19.05%		19.29%		19.54%	
Operating Temperature (°C)	-40°C~+85°C									
Maximum System Voltage	1500VDC (IEC)									
Maximum Series Fuse Rating	25A									
Power Tolerance	0~+3%									
Temperature Coefficients of Pmax	-0.36%/°C									
Temperature Coefficients of Voc	-0.29%/°C									
Temperature Coefficients of Isc	0.048%/°C									
Nominal Operating Cell Temperature (NOCT)	45±2°C									
Refer. Bifacial Factor	70±5%									

BIFACIAL OUTPUT-REARSIDE POWER GAIN

		399Wp	404Wp	410Wp	415Wp	420Wp
5%	Maximum Power (Pmax)	399Wp	404Wp	410Wp	415Wp	420Wp
	Module Efficiency STC (%)	19.49%	19.75%	20.00%	20.26%	20.52%
15%	Maximum Power (Pmax)	437Wp	443Wp	449Wp	454Wp	460Wp
	Module Efficiency STC (%)	21.35%	21.63%	21.91%	22.19%	22.47%
25%	Maximum Power (Pmax)	475Wp	481Wp	488Wp	494Wp	500Wp
	Module Efficiency STC (%)	23.20%	23.51%	23.81%	24.12%	24.42%

* STC: Irradiance 1000W/m² Cell Temperature 25°C AM=1.5

NOCT: Irradiance 800W/m² Ambient Temperature 20°C AM=1.5 Wind Speed 1m/s

* Power measurement tolerance: ± 3%

IEC 60904-1, Photovoltaic devices - Part 1: Measurement of photovoltaic current-voltage characteristics

CAUTION: READ SAFETY AND INSTALLATION INSTRUCTIONS BEFORE USING THE PRODUCT.

© Jinko Solar Co., Ltd. All rights reserved. Specifications included in this datasheet are subject to change without notice.
JKM380-400M-72HL-TV-F40-A2-US