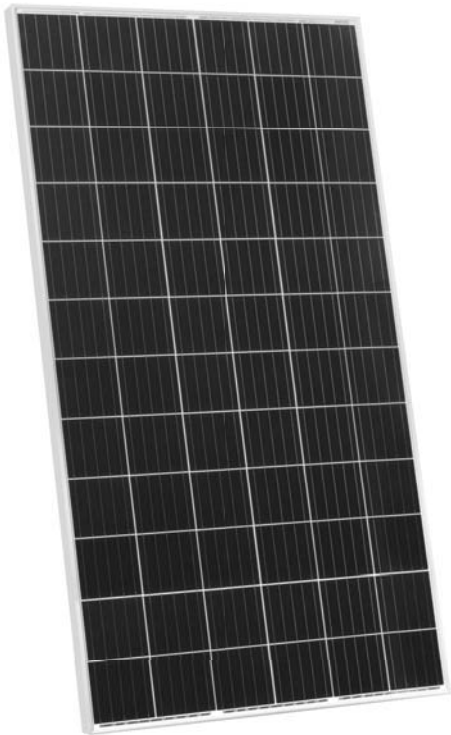
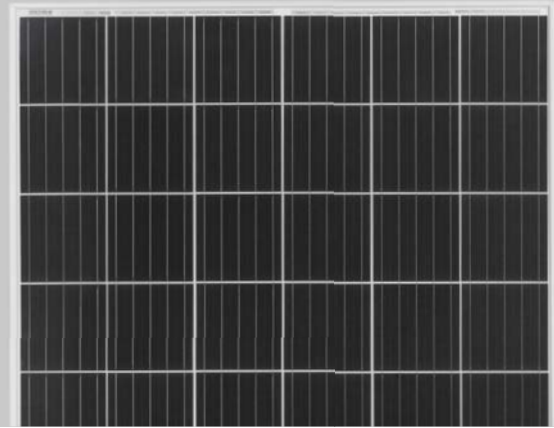


# Eagle 72M G2 380-400 Watt

MONO PERC MODULE

Positive power tolerance of 0~+3%



## KEY FEATURES



### Diamond Cell Technology

Uniquely designed high performance 5 busbar mono PERC cell



### High Voltage

UL and IEC 1500V certified; lowers BOS costs and yields better LCOE



### PID Free

Reinforced cell prevents potential induced degradation



### Better Low-Light Performance

Excellent performance in low-light environments



### Strength and Durability

Certified for high snow (5400Pa) and wind (2400Pa) loads



### Weather Resistance

Certified for salt mist and ammonia resistance

- ISO9001:2008 Quality Standards
- ISO14001:2004 Environmental Standards
- OHSAS18001 Occupational Health & Safety Standards
- IEC61215, IEC61730 certified products
- UL1703 certified products

Nomenclature:

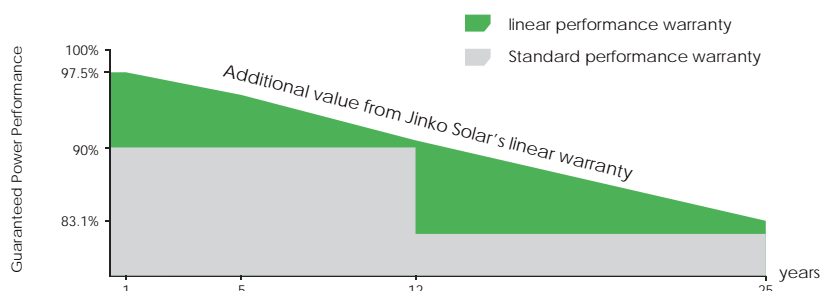
**JKM400M - 72L - V**

Code	Cell	Code	Certification
null	Normal	null	1000V
L	Diamond	V	1500V

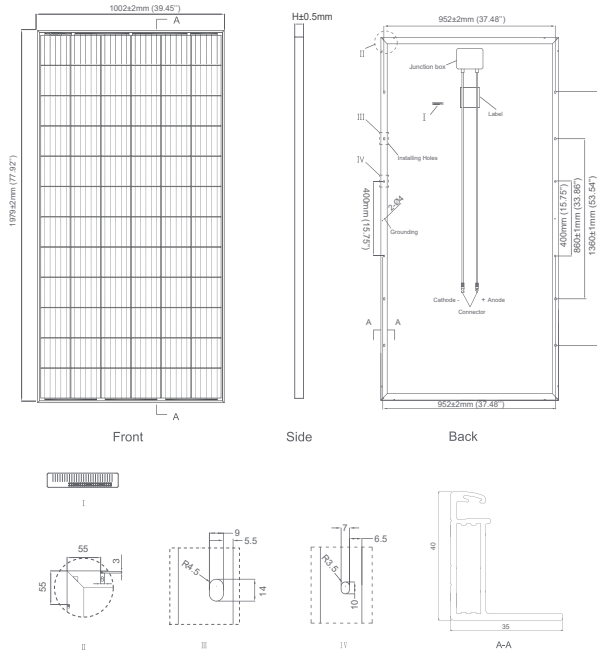


## LINEAR PERFORMANCE WARRANTY

12 Year Product Warranty • 25 Year Linear Power Warranty



## Engineering Drawings

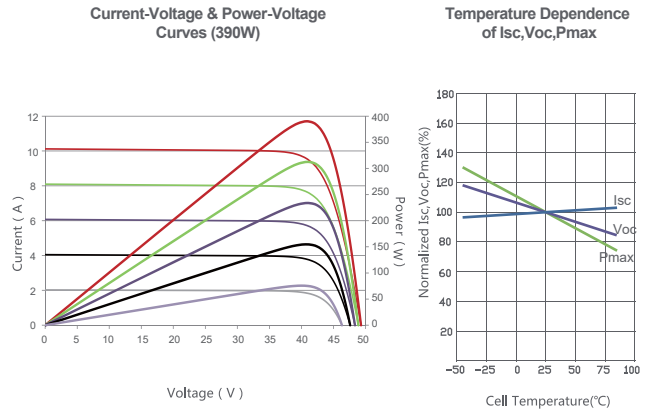


## Packaging Configuration

(Two pallets = One stack)

27pcs/pallet, 54pcs/stack, 594pcs/40'HQ Container

## Electrical Performance & Temperature Dependence



## Mechanical Characteristics

Cell Type	Mono PERC Diamond Cell (158.75 x 158.75 mm)
No. of Cells	72 (6x12)
Dimensions	1979x1002x40mm (77.91x39.45x1.57 inch)
Weight	22.5 kg (49.6 lbs.)
Front Glass	3.2mm, Anti-Reflection Coating, High Transmission, Low Iron, Tempered Glass
Frame	Anodized Aluminium Alloy
Junction Box	IP67 Rated
Output Cables	12 AWG, Length 1200mm (47.24in) or Customized Length
Fire Type	Type 1

## SPECIFICATIONS

Module Type	JKM380M-72L-V		JKM385M-72L-V		JKM390M-72L-V		JKM395M-72L-V		JKM400M-72L-V	
	STC	NOCT	STC	NOCT	STC	NOCT	STC	NOCT	STC	NOCT
Maximum Power (Pmax)	380Wp	286Wp	385Wp	290Wp	390Wp	294Wp	395Wp	298Wp	400Wp	302Wp
Maximum Power Voltage (Vmp)	40.5V	38.6V	40.8V	38.8V	41.1V	39.1V	41.4V	39.3V	41.7V	39.6V
Maximum Power Current (Imp)	9.39A	7.42A	9.44A	7.48A	9.49A	7.54A	9.55A	7.60A	9.60A	7.66A
Open-circuit Voltage (Voc)	48.9V	47.5V	49.1V	47.7V	49.3V	48.0V	49.5V	48.2V	49.8V	48.5V
Short-circuit Current (Isc)	9.75A	7.88A	9.92A	7.95A	10.12A	8.02A	10.23A	8.09A	10.36A	8.16A
Module Efficiency STC (%)	19.16%		19.42%		19.67%		19.92%		20.17%	
Operating Temperature (°C)	-40°C~+85°C									
Maximum System Voltage	1500VDC(UL)/1500VDC(IEC)									
Maximum Series Fuse Rating	20A									
Power Tolerance	0~+3%									
Temperature Coefficients of Pmax	-0.37%/°C									
Temperature Coefficients of Voc	-0.28%/°C									
Temperature Coefficients of Isc	0.048%/°C									
Nominal Operating Cell Temperature (NOCT)	45±2°C									

STC: Irradiance 1000W/m<sup>2</sup>

Cell Temperature 25°C

AM=1.5

NOCT: Irradiance 800W/m<sup>2</sup>

Ambient Temperature 20°C

AM=1.5

Wind Speed 1m/s

\* Power measurement tolerance: ± 3%

CAUTION: READ SAFETY AND INSTALLATION INSTRUCTIONS BEFORE USING THE PRODUCT.  
 © Jinko Solar Co., Ltd. All rights reserved. Specifications included in this datasheet are subject to change without notice.  
 JKM380-400M-72L-V-A2-US