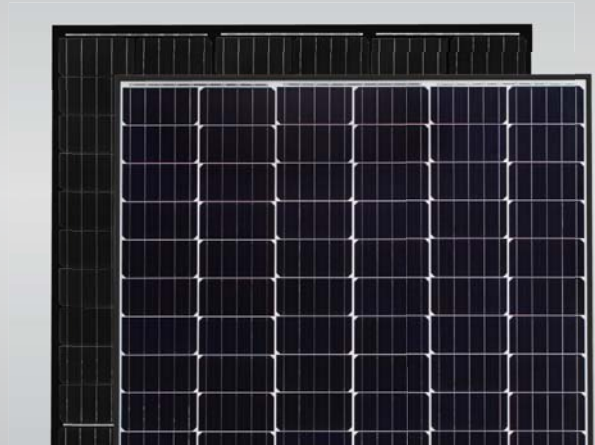


Eagle HC 60 285-305 Watt

MONO PERC HALF CELL MODULE

Positive power tolerance of 0~+3%



KEY FEATURES



Innovative Solar Cells

Five busbar mono half cell technology



High Efficiency

Higher module conversion efficiency (up to 18.47%) due to lower resistance characteristics



PID-Free

World's 1st PID-Free module



Low-Light Performance

Advanced glass technology improves light absorption and retention



Strength and Durability

Certified for high snow (5400 Pa) and wind (2400 Pa) loads



- ISO9001:2008 Quality Standards
- ISO14001:2004 Environmental Standards
- OHSAS18001 Occupational Health & Safety Standards
- IEC61215, IEC61730 certified products

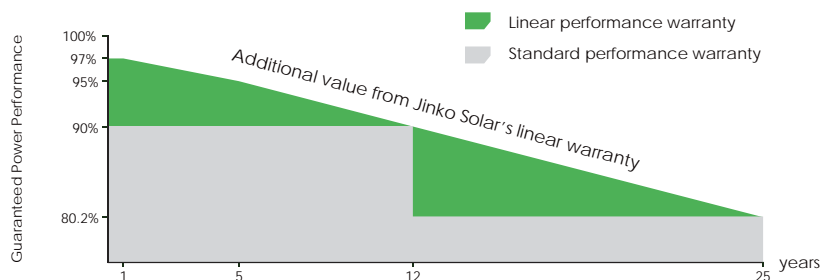
Nomenclature:

JKM305M-60HB

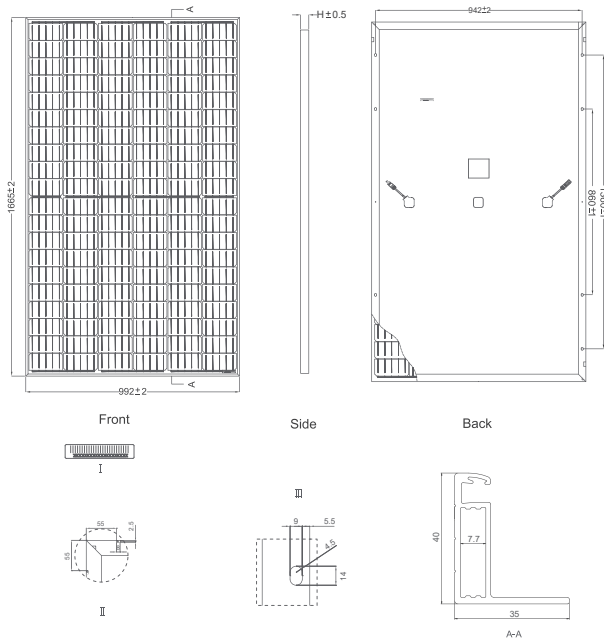
| Code | Cell | Code | Backsheet |
|------|------|------|-----------|
| null | Full | null | White |
| H | Half | B | Black |

LINEAR PERFORMANCE WARRANTY

10 Year Product Warranty • 25 Year Linear Power Warranty



Engineering Drawings

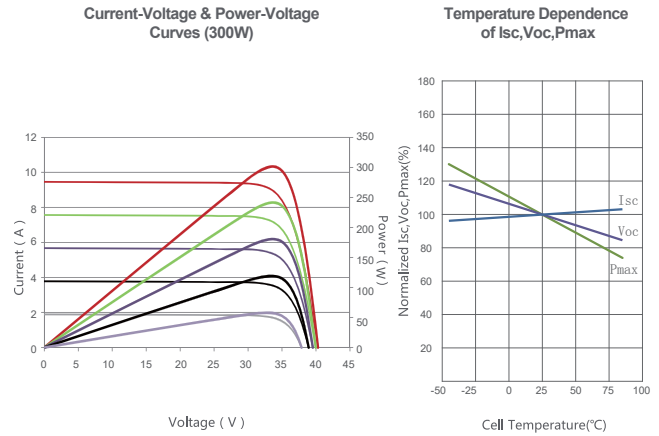


Packaging Configuration

(Two pallets = One stack)

26pcs/pallet , 52pcs/stack, 676 pcs/40'HQ Container

Electrical Performance & Temperature Dependence



Mechanical Characteristics

| | |
|-------------------|---|
| Cell Type | Monocrystalline 156×156mm (6 inch) |
| No. of Half-cells | 120 (12×10) |
| Dimensions | 1665×992×40mm (65.55×39.05×1.57 inch) |
| Weight | 19.0 kg (41.9 lbs) |
| Front Glass | 3.2mm, Anti-Reflection Coating, High Transmission, Low Iron, Tempered Glass |
| Frame | Anodized Aluminium Alloy |
| Junction Box | IP67 Rated |
| Output Cables | Anode 290mm, Cathode 145mm or Customized Length |

SPECIFICATIONS

| Module Type | JKM285M-60H | | JKM290M-60H | | JKM295M-60H | | JKM300M-60H | | JKM305M-60H | |
|---|--------------------------|-------|-------------|-------|-------------|-------|-------------|-------|-------------|-------|
| | STC | NOCT | STC | NOCT | STC | NOCT | STC | NOCT | STC | NOCT |
| Maximum Power (Pmax) | 285Wp | 212Wp | 290Wp | 216Wp | 295Wp | 220Wp | 300Wp | 224Wp | 305Wp | 227Wp |
| Maximum Power Voltage (Vmp) | 32.0V | 29.9V | 32.2V | 30.2V | 32.4V | 30.4V | 32.6V | 30.6V | 32.8V | 30.8V |
| Maximum Power Current (Imp) | 8.90A | 7.12A | 9.02A | 7.15A | 9.10A | 7.24A | 9.21A | 7.32A | 9.30A | 7.40A |
| Open-circuit Voltage (Voc) | 38.7V | 36.4V | 39.5V | 36.6V | 39.7V | 36.8V | 40.1V | 37.0V | 40.3V | 37.2V |
| Short-circuit Current (Isc) | 9.51A | 7.72A | 9.55A | 7.81A | 9.61A | 7.89A | 9.72A | 8.01A | 9.83A | 8.12A |
| Module Efficiency STC (%) | 17.26% | | 17.56% | | 17.86% | | 18.16% | | 18.47% | |
| Operating Temperature(°C) | -40°C~+85°C | | | | | | | | | |
| Maximum system voltage | 1000VDC(UL)/1000VDC(IEC) | | | | | | | | | |
| Maximum series fuse rating | 20A | | | | | | | | | |
| Power tolerance | 0~+3% | | | | | | | | | |
| Temperature coefficients of Pmax | -0.37%/°C | | | | | | | | | |
| Temperature coefficients of Voc | -0.29%/°C | | | | | | | | | |
| Temperature coefficients of Isc | 0.048%/°C | | | | | | | | | |
| Nominal operating cell temperature (NOCT) | 45±2°C | | | | | | | | | |

STC: ☀ Irradiance 1000W/m²

🌡 Cell Temperature 25°C

☁ AM=1.5

NOCT: ☀ Irradiance 800W/m²

🌡 Ambient Temperature 20°C

☁ AM=1.5

🌀 Wind Speed 1m/s

* Power measurement tolerance: ± 3%

CAUTION: READ SAFETY AND INSTALLATION INSTRUCTIONS BEFORE USING THE PRODUCT.
 © Jinko Solar Co., Ltd. All rights reserved. Specifications included in this datasheet are subject to change without notice.
 US-MKT-305M-60H_1.0_rev2018