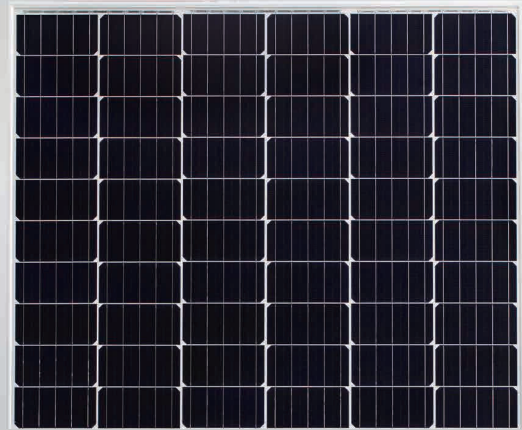


Eagle HC 72-V 340-360 Watt

MONO CRYSTALLINE MODULE

Positive power tolerance of 0~+3%



KEY FEATURES



Innovative Solar Cells

Five busbar mono half cell technology



High Efficiency

Higher module conversion efficiency (up to 18.26%) due to lower resistance characteristics



High Voltage

UL and IEC 1500V certified; lowers BOS costs and yields better LCOE



PID-Free

World's 1st PID-Free module



Low-Light Performance

Advanced glass technology improves light absorption and retention



Strength and Durability

Certified for high snow (5400 Pa) and wind (2400 Pa) loads

- ISO9001:2008 Quality Standards
- ISO14001:2004 Environmental Standards
- OHSAS18001 Occupational Health & Safety Standards
- IEC61215, IEC61730 certified products

Nomenclature:

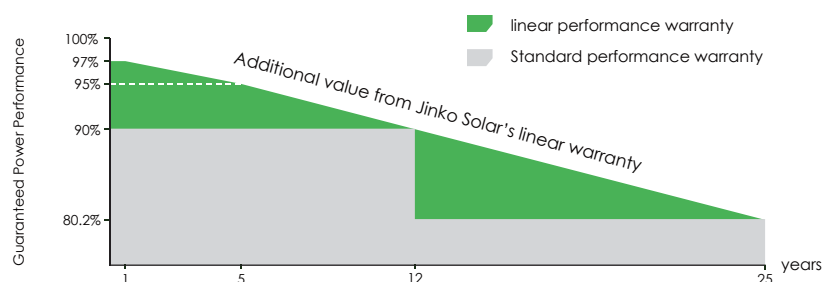
JKM360M-72H-V

Code	Cell
null	Full
H	Half

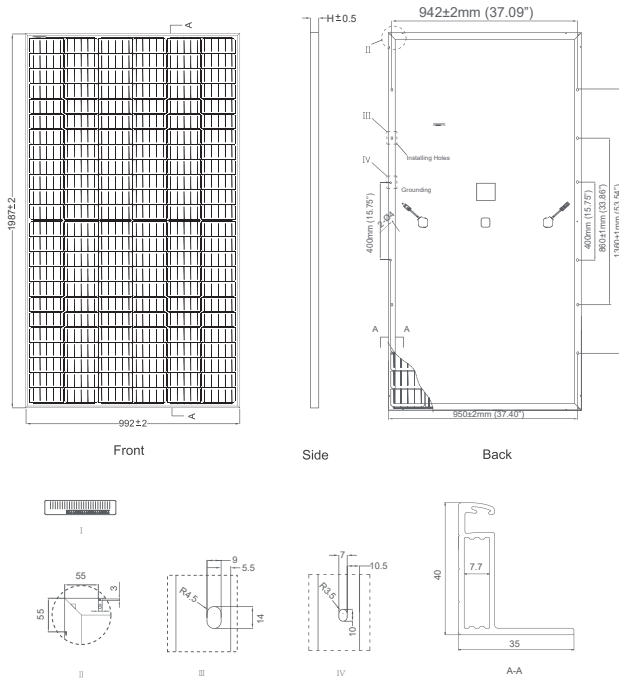


LINEAR PERFORMANCE WARRANTY

10 Year Product Warranty • 25 Year Linear Power Warranty



Engineering Drawings

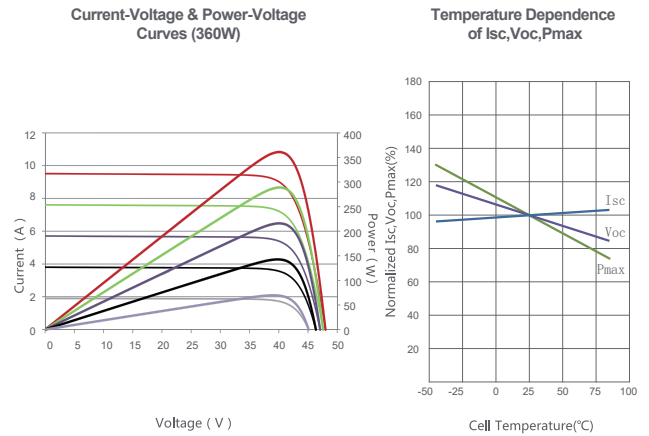


Packaging Configuration

(Two pallets =One stack)

26pcs/pallet , 52pcs/stack, 572 pcs/40'HQ Container

Electrical Performance & Temperature Dependence



Mechanical Characteristics

Cell Type	Mono-crystalline 156×156mm (6 inch)
No. of Half-cells	144 (12×12)
Dimensions	1987×992×40mm (78.23×39.05×1.57 inch)
Weight	26.5 kg (58.4 lbs)
Front Glass	4.0mm, Anti-Reflection Coating, High Transmission, Low Iron, Tempered Glass
Frame	Anodized Aluminium Alloy
Junction Box	IP67 Rated
Output Cables	anode 1400mm, cathode 1400mm

SPECIFICATIONS

Module Type	JKM340M-72H-V		JKM345M-72H-V		JKM350M-72H-V		JKM355M-72H-V		JKM360M-72H-V	
	STC	NOCT	STC	NOCT	STC	NOCT	STC	NOCT	STC	NOCT
Maximum Power (Pmax)	340Wp	255Wp	345Wp	259Wp	350Wp	263Wp	355Wp	267Wp	360Wp	271Wp
Maximum Power Voltage (Vmp)	38.8V	37.1V	39.1V	37.3V	39.3V	37.5V	39.5V	37.7V	39.7V	37.9V
Maximum Power Current (Imp)	8.74A	6.87A	8.83A	6.93A	8.91A	7.00A	8.99A	7.07A	9.07A	7.14A
Open-circuit Voltage (Voc)	47.5V	45.6V	47.7V	45.9V	47.9V	46.2V	48.1V	46.5V	48.3V	46.8V
Short-circuit Current (Isc)	8.93A	7.07A	9.03A	7.13A	9.13A	7.19A	9.23A	7.25A	9.33A	7.31A
Module Efficiency STC (%)	17.25%		17.50%		17.76%		18.01%		18.26%	
Operating Temperature(°C)	-40°C~+85°C									
Maximum system voltage	1500VDC(UL)/1500VDC(IEC)									
Maximum series fuse rating	20A									
Power tolerance	0~+3%									
Temperature coefficients of Pmax	-0.37%/°C									
Temperature coefficients of Voc	-0.29%/°C									
Temperature coefficients of Isc	0.048%/°C									
Nominal operating cell temperature (NOCT)	45±2°C									

STC: Irradiance 1000W/m² Cell Temperature 25°C AM=1.5

NOCT: Irradiance 800W/m² Ambient Temperature 20°C AM=1.5 Wind Speed 1m/s

* Power measurement tolerance: ± 3%